

Configuring the Phoenix Modem as a Slave Device in TNCS Application Note

Overview

Purpose

The purpose of this document is to provide instructions for configuring the Phoenix Modem as a slave device in Transmission Network Control System (TNCS). This document is a supplement to the *TNCS Administrator Software User Guide*, part number 4013494.

Who Should Use This Document

This document is intended for authorized personnel who have experience working with similar equipment. The personnel should have appropriate background and knowledge to complete the procedures described in this document. Scientific-Atlanta service engineers who help system operators manage their systems will also find the contents of this document useful.

Qualified Personnel

Only appropriately qualified and skilled personnel should attempt to install, operate, maintain, and service this product.



WARNING:

Allow only qualified and skilled personnel to install, operate, maintain, and service this product. Otherwise, personal injury or equipment damage may occur.

Related Publication

You may find the following publications useful as you implement the procedures in this document.

- *TNCS Administrator Software User Guide*, part number 4013494
- *TNCS Cabling Guide*, part number 736790

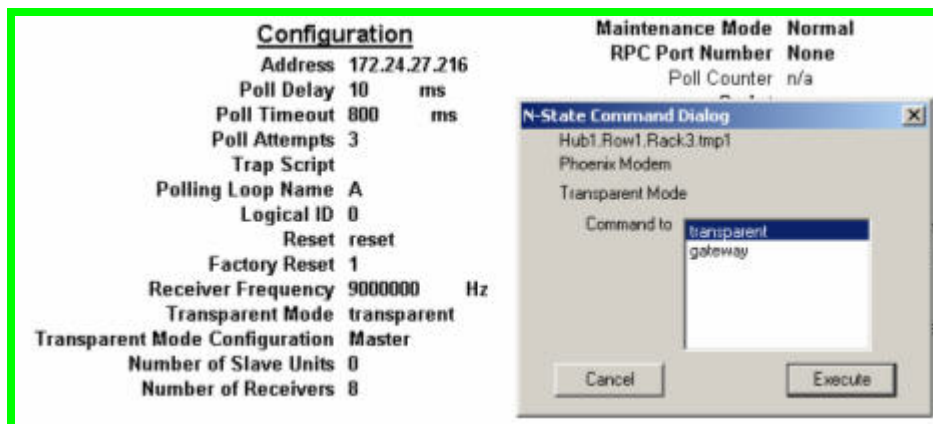
In This Document

- Configuring Slave Units for the Transparent Mode Phoenix Modem..... 3
- Removing Slave Units from the Configuration..... 7
- For Information..... 9

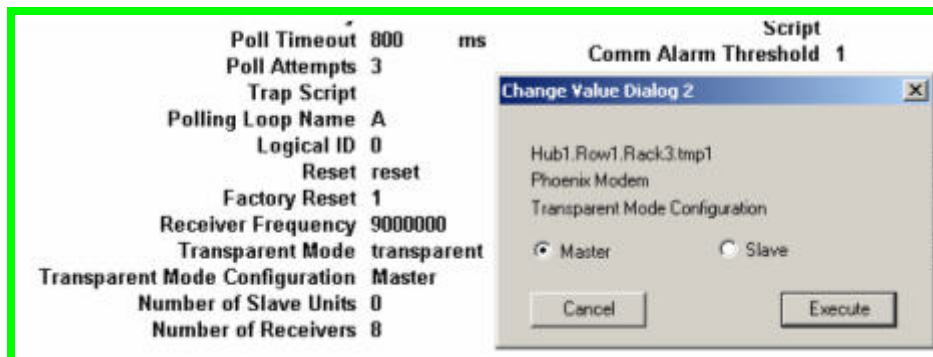
Configuring Slave Units for the Transparent Mode Phoenix Modem

- 1 Open the Detail window for the Master Transparent Mode Phoenix (TMP).
- 2 Open the Detail window for each of the Slave TMP units.
- 3 Under the Configuration section of each TMP, double-click on the "Transparent Mode" parameter to open the Command Dialog window. Select the **transparent** option and then click **Execute** to change the setting.

Result: When the transparent option is selected, another parameter labeled "Transparent Mode Configuration" is displayed directly under the "Transparent Mode" parameter.



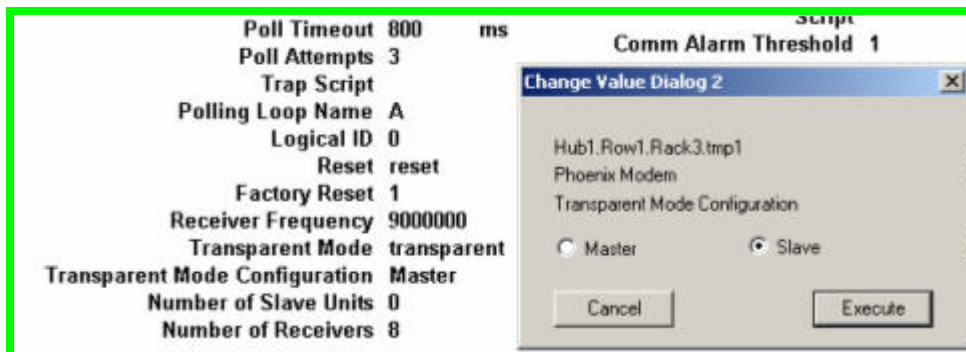
- 4 On the Detail window of the Master TMP, double-click on the "Transparent Mode Configuration" parameter to open the Command Dialog window. Select the **Master** option and then click **Execute** to change the setting.



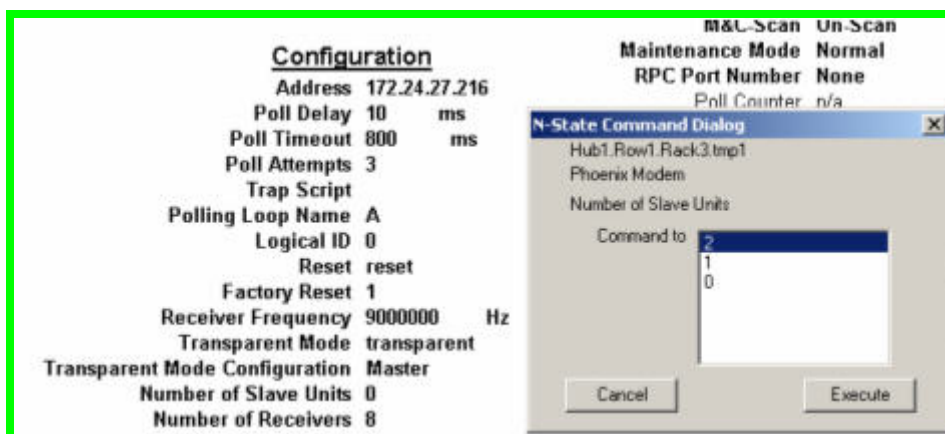
- 5 On the Detail window of each Slave TMP, double-click on the "Transparent Mode Configuration" parameter to open the Command Dialog window. Select the **Slave** option and then click **Execute** to change the setting.

Configuring Slave Units for the Transparent Mode Phoenix Modem

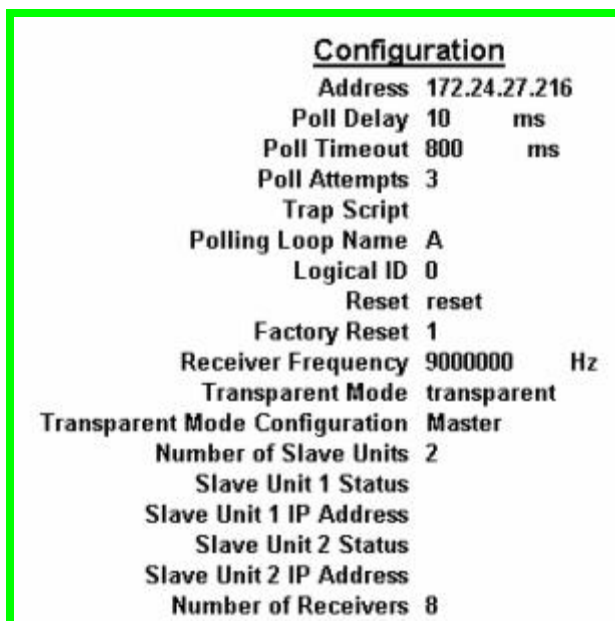
Note: The rest of the setup occurs on the Master TMP Detail window only.



- On the Detail window of the Master TMP, double-click on the "Number of Slave Units" parameter to open the Command Dialog window. Select the 1 or 2 according to you system and then click **Execute** to change the setting.



Result: The Detail window for the Master TMP displays parameters for the configuration of each Slave TMP. These are "Slave Unit X Status" and "Slave Unit X IP Address".

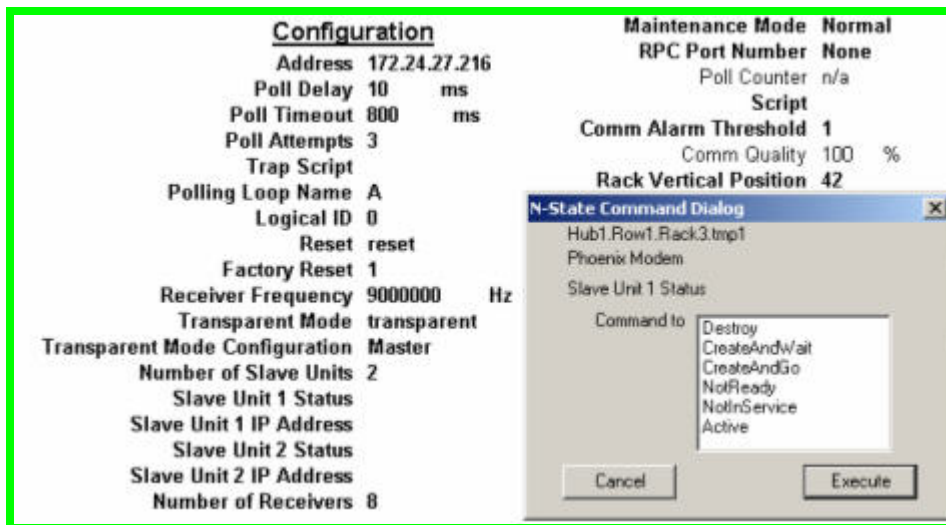


Configuring Slave Units for the Transparent Mode Phoenix Modem

Note: If you have "SNMP Manager Debug Mode" set to "On" in the System Details, it is normal during configuration to see "Err 2..." messages in the Software Log for the TMP devices under configuration. These message should stop once configuration is complete.

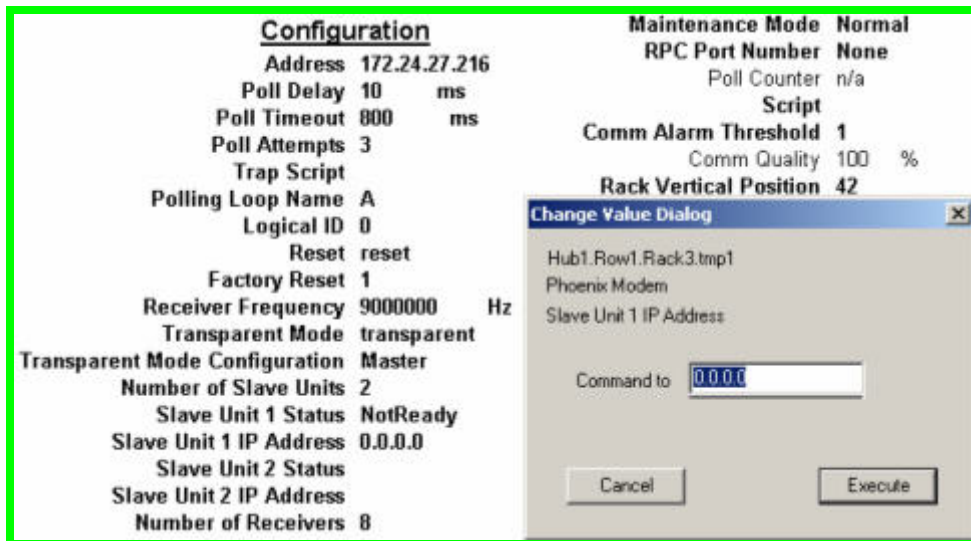
- 7 Double-click parameter **Slave Unit 1 Status** to open the Command Dialog window. Select the **CreateAndWait** setting and then click **Execute**.

Result: The parameter "Slave Unit 1 Status" displays "CreateAndWait" and quickly changes to "NotReady". This is normal. Also, the "Slave Unit 1 IP Address" should now display "0.0.0.0".



- 8 Double-click parameter **Slave Unit 1 IP Address** to open the Command Dialog window. Enter the IP Address of Slave Unit 1 and then click **Execute**.

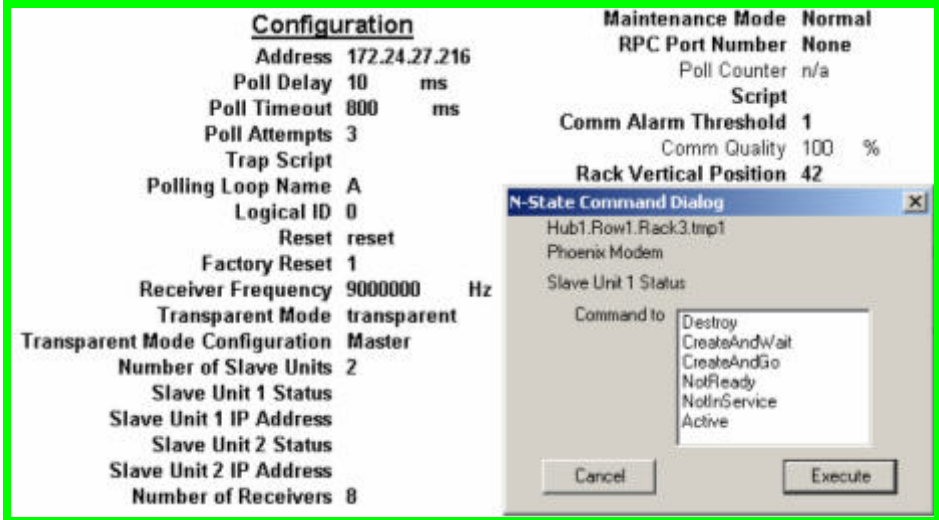
Result: The parameter "Slave Unit 1 Status" displays "NotInService". This is normal.



Configuring Slave Units for the Transparent Mode Phoenix Modem

- 9 Double-click parameter **Slave Unit 1 Status** to open the Command Dialog window. Select the **Active** setting and then click **Execute**.

Result: The parameter "Slave Unit 1 Status" displays "Active".

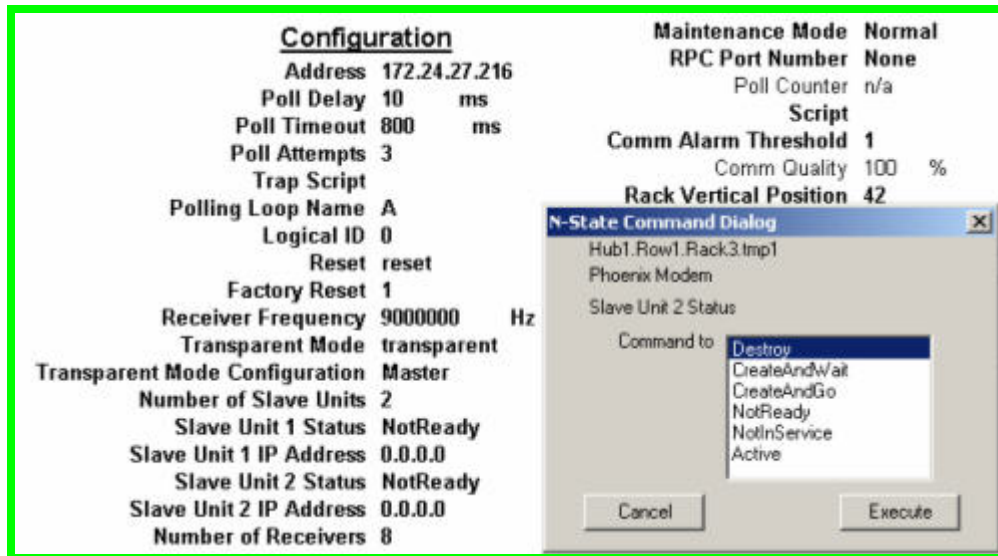


- 10 Repeat steps 7 through 9 for Slave Unit 2, if needed.

Removing Slave Units from the Configuration

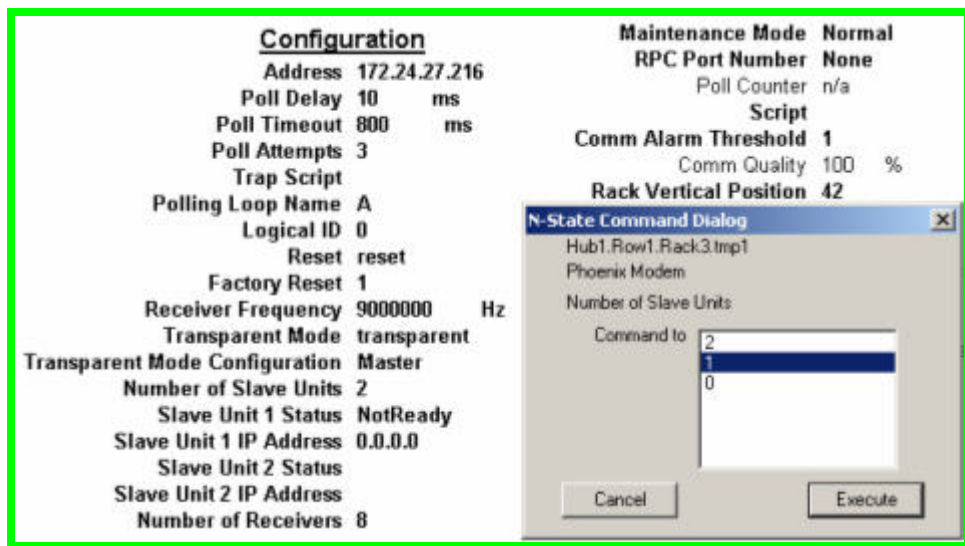
- 1 Open the Detail window for the Master TMP.
 - If Slave Unit 2 is configured, proceed to Step 2.
 - If Slave Unit 2 is not configured, proceed to Step 4.
- 2 Double-click parameter **Slave Unit 2 Status** to open the Command Dialog window. Select the **Destroy** setting and click **Execute**.

Result: The parameter "Slave Unit 2 Status" displays "Destroy".



- 3 Double-click parameter **Number of Slave Units** to open the Command Dialog window. Select the **1** setting and click **Execute**.

Result: The parameter "Number of Slave Units" displays "1" and both parameters for Slave Unit 2 are removed from the screen.

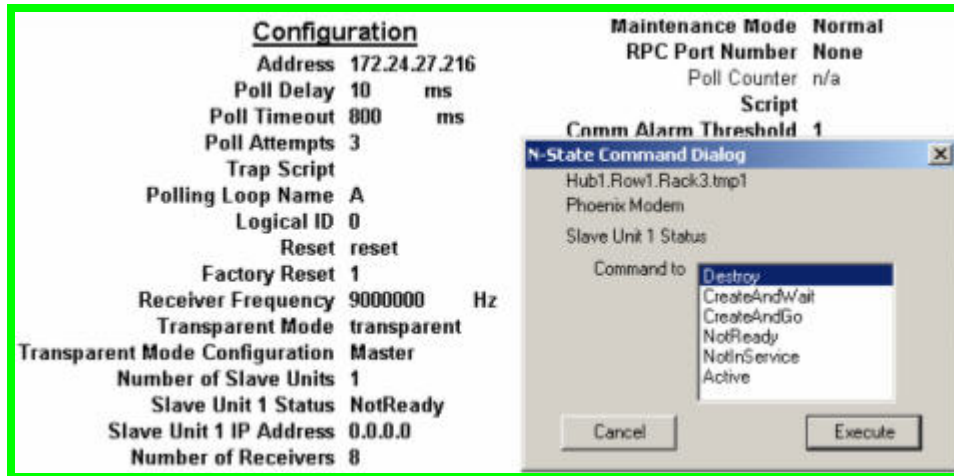


Note: If this is the only unit you wish to remove stop here.

Removing Slave Units from the Configuration

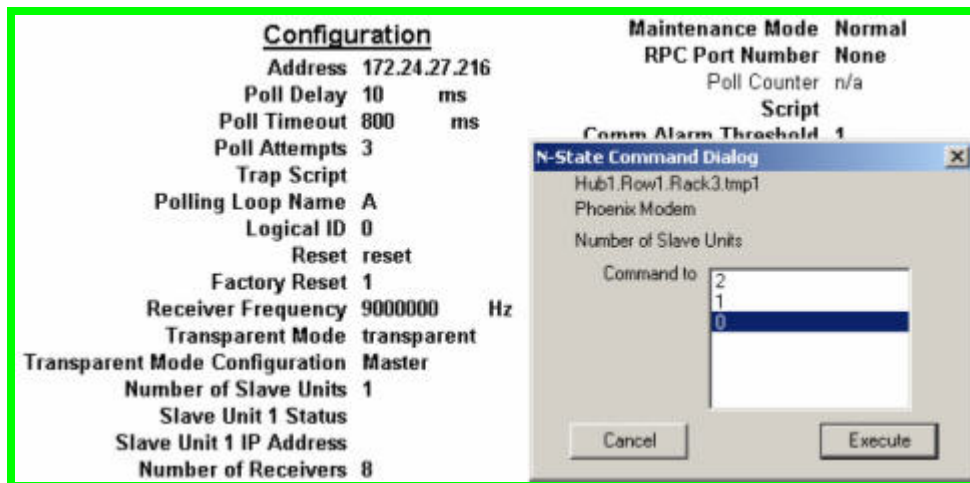
- 4 Double-click parameter **Slave Unit 1 Status** to open the Command Dialog window. Select the **Destroy** setting and click **Execute**.

Result: The parameter "Slave Unit 1 Status" displays "Destroy".



- 5 Double-click parameter **Number of Slave Units** to open the Command Dialog window. Select the **0** setting and click **Execute**.

Result: The parameter "Number of Slave Units" displays "0" and both parameters for Slave Unit 1 are removed from the screen.



For Information

Support Telephone Numbers

Use the following table to find the Technical Support and Customer Service telephone numbers for your area.

Region	Centers	Telephone and Fax Numbers
North America	SciCare™ Broadband Services	For <i>Technical Support</i> , call: <ul style="list-style-type: none"> ■ Toll-free: 1-800-722-2009 ■ Local: 770-236-6900 (Press 2 at the prompt)
	Atlanta, Georgia United States	For <i>Customer Service</i> or to request an RMA number, call: <ul style="list-style-type: none"> ■ Toll-free: 1-800-722-2009 ■ Local: 770-236-6900 (Press 3 at the prompt) ■ Fax: 770-236-5477
Europe	Belgium	For <i>Technical Support</i> , call: <ul style="list-style-type: none"> ■ Telephone: 32-56-445-197 or 32-56-445-155 ■ Fax: 32-56-445-053 For <i>Customer Service</i> or to request an RMA number, call: <ul style="list-style-type: none"> ■ Telephone: 32-56-445-118 ■ Fax: 32-56-445-051
Asia-Pacific Australia	Hong Kong	Telephone: 852-2522-5059 Fax: 852-2522-5624
Brazil	Brazil	For <i>Technical Support</i> , call: <ul style="list-style-type: none"> ■ Telephone: 55-11-3845-9154 ext 230 ■ Fax: 55-11-3845-2514 For <i>Customer Service</i> or to request an RMA number, call: <ul style="list-style-type: none"> ■ Telephone: 770-236-5662 ■ Fax: 770-236-5888
South America, other than Brazil	Argentina	For <i>Technical Support</i> , call: <ul style="list-style-type: none"> ■ Telephone: 54-23-20-403340 ext 109 ■ Fax: 54-23-20-403340 ext 103 For <i>Customer Service</i> or to request an RMA number, call: <ul style="list-style-type: none"> ■ Telephone: 770-236-5662 ■ Fax: 770-236-5888
Mexico, Central America	Mexico	For <i>Technical Support</i> , call: <ul style="list-style-type: none"> ■ Telephone: 52-3515152599 ■ Fax: 52-3515152599 For <i>Customer Service</i> or to request an RMA number, call: <ul style="list-style-type: none"> ■ Telephone: 5255-50818425 ■ Fax: 5255-52610893



Scientific-Atlanta, Inc.
770.236.5000

5030 Sugarloaf Parkway,
P. O. Box 465447

Lawrenceville, GA 30042
www.scientificatlanta.com

Scientific-Atlanta and the Scientific-Atlanta logo are registered trademarks of Scientific-Atlanta, Inc.

SciCare is a trademark of Scientific-Atlanta, Inc.

All other trademarks shown are trademarks of their respective owners.

Product and service availability subject to change without notice.

© 2006 Scientific-Atlanta, Inc. All rights reserved.

February 2006

Printed in United States of America

Part Number 4013558 Rev A